

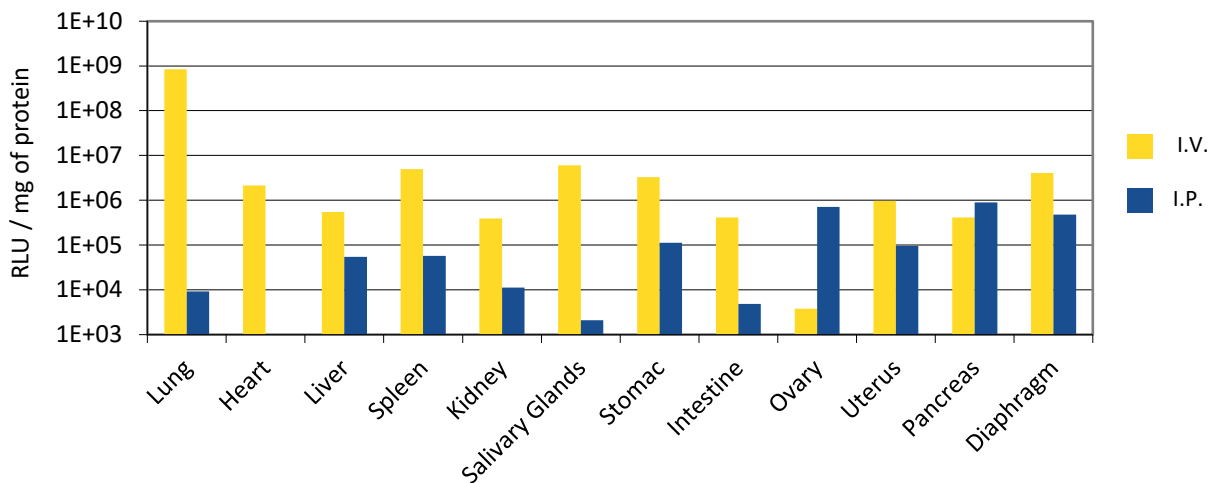
# *in vivo* transfection

## *in vivo*-jetPEI®

- + Polyvalent: *in vivo* delivery of DNA, si/sh/miRNA in any animal model
- + Easy to use: Two-step protocol
- + Renowned: Most advanced *in vivo* transfection technology with over 700 peer-reviewed publications
- + Successful: Used from fundamental research to Human clinical trials

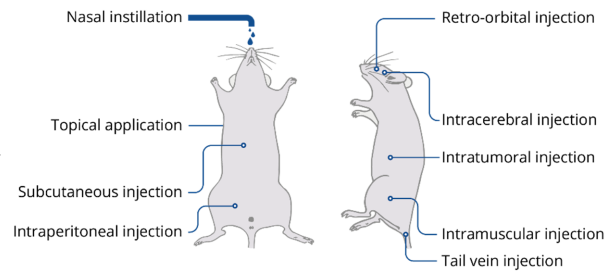
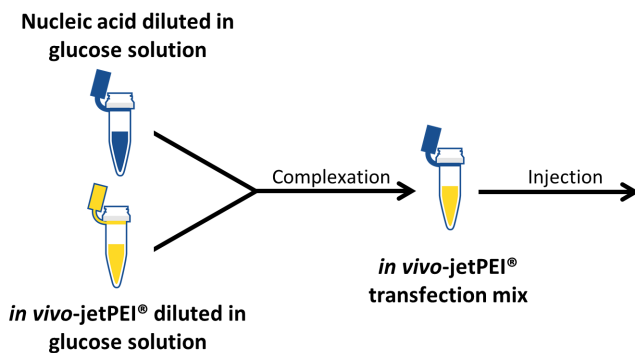


*in vivo*-jetPEI® can be used in a wide range of organs:



Complexes were formed following standard protocols.

### Easy-to-use 2 steps protocol:



Injection in animal model with any administration route

### LISTE DES PRODUITS

Product	Part N°	Reagent size	Amount of 10% glucose solution
<i>in vivo</i> -jetPEI®	101000040	0.1 mL	10 mL
	101000030	0.5 mL	2 x 10 mL



**OZYME**  
Des femmes et des hommes  
au service de vos recherches

### NOUS CONTACTER

Service client - commande : [commande@ozyme.fr](mailto:commande@ozyme.fr)  
Service technique :  
Réactifs : [tech@ozyme.fr](mailto:tech@ozyme.fr)  
Instrumentation : [instrum@ozyme.fr](mailto:instrum@ozyme.fr)

